

DOUBLEPOWER!! SKY

HIGHLY VARIABLE

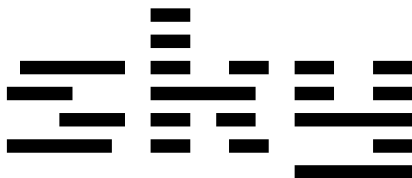
INDUSTRIAL LUMINAIRES

FOR ANY WORKING CONDITIONS

DOUBLEPOWER!! SKY – MORE THAN JUST A HIGH BAY

- High efficacy of the luminaire up to 180 lm/W
- Many performance variations
- High modularity, module arrangement side-by-side and front-to-back
- Possibility to combine optics and various lighting characteristics in one luminaire
- Realistic life-span of 80,000 hours (L80B10)
- 8 year full guarantee
- Unbeatable return on investment and total cost of ownership

doublepower!!
industrial lighting | intelligent | efficient



DOUBLEPOWER!! SKY

HIGHLY VARIABLE

INDUSTRIAL LUMINAIRES

FOR ANY WORKING CONDITIONS

Primary characteristics

- Extreme modularity and variability: many performance variations, variable arrangement of modules, combination of various lighting characteristics in one luminaire
- High-performance heat management of the entire luminaire
- LED light source and LED driver placed in separate heat sinks
- Luminaire efficacy up to 180 lm/W for Ta +50 °C
- For operational temperatures up to +50 °C
- Available with an emergency module for use as emergency lighting
- IP65 enclosure rating
- Available version with front protective glass
- For installation heights from 4 to 30 meters
- Life-span of L80B10 => 80,000 hours
- 8 year guarantee

Exceptional modularity to truly and effectively illuminate your operations

Distribution of the emitted light to the illuminated area is just as important as the overall luminous flux efficacy.

We supply doublepower!! SKY luminaires in many performance variations. They are composed of modules with LED chips and one optical cover. Each module can be fitted with a different optical cover. Thus we can combine various light-distribution characteristics in one luminaire.

For example, the doublepower!! SKY 113 W luminaire is composed of four modules, each one of which can have its own special light-distribution characteristics. Thanks to this, the luminaire can light up basically any operation in a highly effective manner. It can be perfectly adapted to the required illuminance level, mounting height, placement or installation limitations, the technological layout of your operation, etc.

Luminaire heat management

The doublepower!! SKY luminaire is built for reliable and long-lasting operation at ambient temperatures of -30 °C to +50 °C.

The LED power sources and LED drivers in doublepower!! SKY luminaires are placed in separate boxes to prevent them from thermally affecting one another. The individual components of the luminaire also serve to cool the chips and drivers. Thus, all components in doublepower!! SKY luminaires can operate with a high degree of comfort even at extremely high temperatures of the surrounding environment.

Several important facts

- We have designed the surfaces of the luminaire's body to remove heat properly even in heavily dusty environments.
- We've not only taken into consideration the effective surface area, but also sufficient thermal bridges to make sure heat dissipation is as quick and effective as possible
- Even the vertical ribbing located on the bottom side of the luminaire was designed and properly calculated to anticipate the collection of dust, moisture and other potential dirt.

Thermal-conductive materials for LED source heat removal

Even the smallest unsealed areas between the chip and the cooling system can quickly damage the chip. Incorrect thicknesses or improper application can transform an effective thermal-conductive base into a heat barrier. Even a hundredth of a millimeter can make the difference.

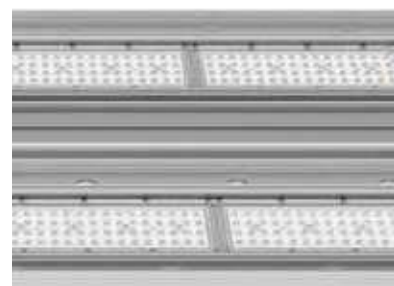
For doublepower!! SKY luminaires, we use thermal-conductive materials specially designed for the specific LED light source. The technological procedure of the tape application guarantees 100% adhesion and therefore the quick and continuous removal of heat from the chips.



Openings in the profile of the luminaire further heighten the efficiency of the cooling system.

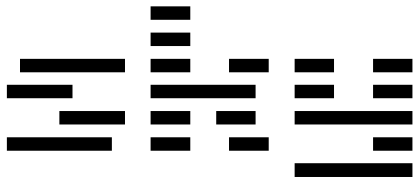


We integrate variations with higher performance into compact units.



Optics and lighting characteristics can be combined freely into one luminaire.





DOUBLEPOWER!! SKY

HIGHLY VARIABLE

INDUSTRIAL LUMINAIRES

FOR ANY WORKING CONDITIONS

LXXBXX – think about the long-term costs

The L80B10 life-span parameter for doublepower!! SKY luminaires is equal to 80,000 hours.

- Parameter L in the code shows the decrease of the luminaire's luminous flux after 80,000 hours in a percentage. L80 means that the doublepower!! SKY luminaire will have at least 80% of its original luminous flux after 80,000 hours of operation.
- Parameter B shows the percentage of luminaires that assumption L does not have to fulfill. With B10, the assumed luminous flux loss does not have to fulfill 10% of the installed luminaires. In other words – 10% of the installed luminaires may suffer greater luminous flux loss for the declared time (80,000 hours).

LXXBXX's lifespan may differ according to varying temperature conditions. L80B10 of the doublepower!! SKY luminaire in the value of 80,000 hours applies to $T_a +50\text{ }^{\circ}\text{C}$.

The LXXBXX parameter is very useful for economical project assessment. In assessing the total cost of ownership, installing cheaper luminaires with a worse LXXBXX parameter will paradoxically raise the price of your project, as they will need to be replaced sooner.

Optical system

In doublepower!! SKY luminaires, we use highly durable LED optics made by the foremost manufacturers which do not degrade over time. The transmittance of individual optics is between 92% and 96%.

In order to lower levels of glare, we use a larger number of LED chips and larger surfaces for our optics. At the same time, we sink the optical system deeper into the body of the luminaire.

Doublepower!! SKY luminaires can also be equipped with protective glass. We use special glass with a low iron content and the best level of transmittance on the market at 92%.

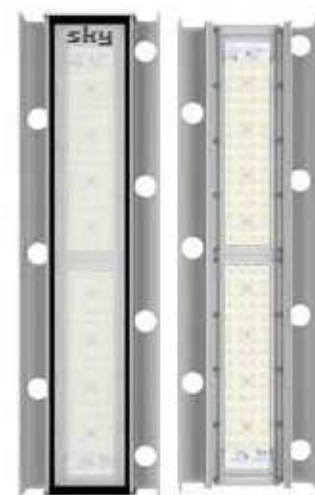
Easy installation and maintenance

Installation via a connector and the possibility of choosing how to space installation points makes mounting quicker and reduces costs of installation and maintenance. The luminaire is made to adapt to various mounting and hanging limitations.

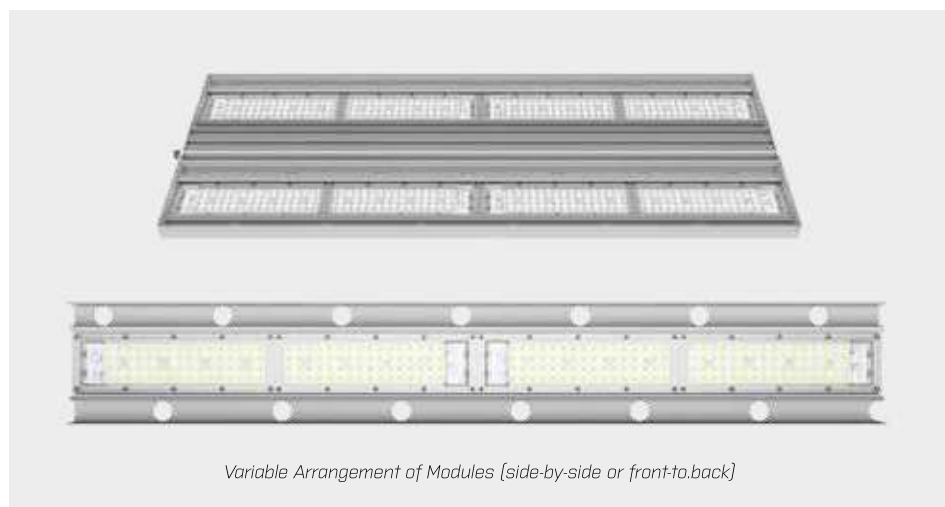
NEED ADDITIONAL INFORMATION? JUST CONTACT US. WE'LL BE HAPPY TO GIVE YOU MORE.
CALL +420 222 312 917 OR EMAIL US AT NA INFO@DOUBLEPOWER.CZ.



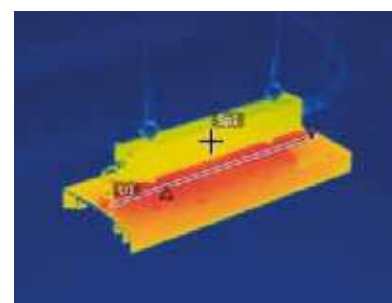
Flexibility in luminaire installation: IP68 connector and adjustable spacing of installation points.



Versions with or without Front Glass Cover

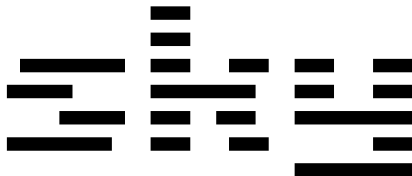


Variable Arrangement of Modules (side-by-side or front-to-back)



We test heat management in real operation.



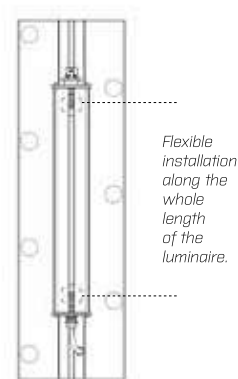


Specification

	2 modules	3 modules	4 modules	5 modules	6 modules	7 modules	8 modules	9 modules	10 modules	12 modules
Output (High Efficacy Type) HE	41,20 W	61,80 W	82,40 W	103,00 W	123,60 W	144,20 W	164,80 W	185,40 W	206,00 W	247,20 W
Output (High Output Type) HO	55,40 W	83,10 W	110,80 W	138,50 W	166,20 W	193,90 W	221,60 W	249,30 W	277,00 W	332,40 W
Luminous Flux of the Luminaire (HE Type) with 4000 K	7 415 lm	11 123 lm	14 831 lm	18 539 lm	22 246 lm	25 954 lm	29 662 lm	33 369 lm	37 077 lm	44 493 lm
Luminous Flux of the Luminaire (HO Type) with 4000 K	9 656 lm	14 485 lm	19 313 lm	24 141 lm	28 969 lm	33 798 lm	38 626 lm	43 454 lm	48 282 lm	57 939 lm
Efficacy of the LED chip / luminaire (HE Type)	190,83 lm/W / 179,99 lm/W									
Efficacy of the LED chip / luminaire (HO Type)	184,80 lm/W / 174,30 lm/W									
LED Light Source	Samsung LM 301 B									
Color Temperature	2700 K – 6500 K									
Life-time of the Luminaire	L80B10 > 80 000 hours at Ta +50 °C									
Color Rendering Index (CRI)	Ra > 80 and Ra > 90									
Front cover	PMMA with possibility of 3 mm hardened glass cover									
	High level of permeability, without degradation									
Body	Robust Body from Anodized Aluminium, separate body for LED driver									
	Highly Efficient Thermal Management									
	Low Operating Temperatures of all Components									
Protection rating	IP 65									
Operating Temperatures and Electronics	-30 °C ~ +50 °C									
	Tridonic LED Driver with Life-time more than 100 000 hours									
Optical System	System of PMMA Optics with various lighting characteristics									
	Low Glare Factor									
Other	No stroboscopic effect									
	DALI / DSI smooth control, possibility to include into a complex DALI / KNX control system									
	Fast and Easy Mounting thanks to IP68 connector and adjustable hanging points									
Manufacturer	doublepower!! s.r.o. Czech Republic									

Dimensions / cm (suspended luminaire)

	2 modules	3 modules	4 modules	5 modules	6 modules	7 modules	8 modules	9 modules	10 modules	12 modules
Lenght (without connector)	50,6	75,9	101,2	126,5	151,8	177,1	202,4	227,7	132,3	157,6
– with unplugged connector	50,6	75,9	101,2	126,5	151,8	177,1	202,4	227,7	135,8	161,1
– with plugged connector	50,6	75,9	101,2	126,5	151,8	177,1	202,4	227,7	142,8	168,1
– with cable out	50,6	75,9	101,2	126,5	151,8	177,1	202,4	227,7	139,3	164,6
Width	15,1	15,1	15,1	15,1	15,1	15,1	15,1	15,1	38,4	44,7
Height	14,4	14,4	14,4	14,4	14,4	14,4	14,4	14,4	6,5	7
– including hanging rings	18,2	18,2	18,2	18,2	18,2	18,2	18,2	18,2	10,5	11
– including hanging rings and snap-hook	22,5	22,5	22,5	22,5	22,5	22,5	22,5	22,5	15	15,5
Weight (with unplugged connector, without hanging rings)	2,8	3,8	4,8	5,8	6,8	7,8	8,8	9,8	10,8	15,4



Lighting Characteristics

