



www.doublepower.cz

## SEA EX 1/21 LED luminaire

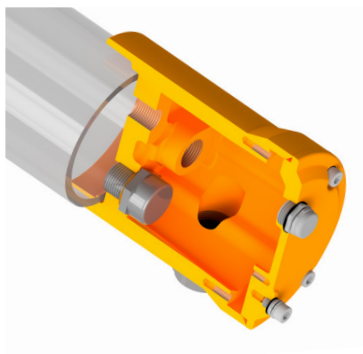
International patented DualVent system.

Ingress Protection IP66/68.

IIC ATEX and IECEx certified.

Up to 10 years warranty.

Easy installation and maintenance friendly.



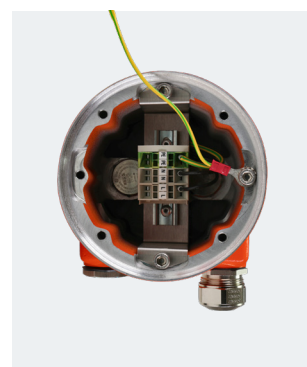
### International patented DualVent system

Prevents condensation inside  
the light fixture while maintaining  
IP66/68 protection

With its unique and patented solution, the doublepower SEA EX 1/21 is the only luminaire that effectively eliminates internal condensation caused by air humidity—while maintaining full compliance with the Ex d IIC explosion-proof standard and ensuring water resistance. The system features two independent breathers, each designed with a specific function and specification. This dual-breather configuration allows continuous pressure equalization with the external environment under all conditions, ensuring optimal performance and extending the luminaire's operational lifespan.

### Application

The luminaire is designed for use in demanding environments, offering minimal maintenance requirements and easy installation. It is ideal for sea-going vessels, offshore platforms, wind power plants, agricultural facilities, the chemical industry, and other similarly challenging settings. Multiple versions are available, each equipped with high-efficiency LEDs and tailored to specific protection classes. The DualVent feature is available across all models.



### Installation

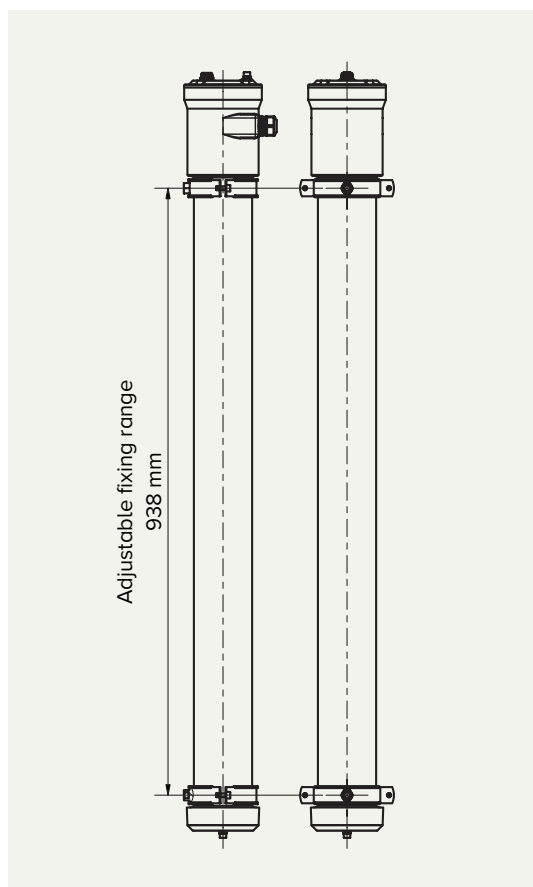
The stainless steel mounting brackets with M10 nuts provide easy installation. They can be moved to adjust the fixing range and rotated to change the angle. The luminaire features external grounding points on both sides. For connection, an easily accessible Ex e chamber with a plug-in terminal is available, which also supports loop wiring.

### Ex marking (ATEX directive 2014/34/EU and IECEx)

- Ⓔ II 2G Ex db eb op is IIC T6...T5 Gb
- Ⓔ II 2G Ex db eb op is IIB+H2 T6...T5 Gb
- Ⓔ II 2G Ex db eb op is IIB T6...T5 Gb
- Ⓔ II 2D Ex tb op is IIIC T85 °C Db



Bottom-entry cable glands to prevent liquid ingress and enhance sealing integrity.



## Main characteristics

Designed for indoor and outdoor applications

Suitable for explosive environment areas in zone 1/21 in accordance with ATEX directive 2014/34/EU and IECEx

Tested for highly demanding environments including temperature drops and vibrations

Proven resistance to corrosion and saltwater

Certified for ambient temperatures from -20 °C up to +50 °C up to T6

Solution to prevent humidity condensation inside the luminaire

Variable position of the glands

Optional canopy available

[www.doublepower.cz](http://www.doublepower.cz)

## Specification

Output	26.7 W	40.4 W	54 W
Luminous flux of the Luminaire with 4000 K / diffused optics	4,137 lm	6,233 lm	8,276 lm
Efficacy of the luminaire with diffused optics	155 lm/W	154 lm/W	153 lm/W
Available color temperatures	3,000 / 4,000 / 5,000 / 6,500 K		
Available rendering index	Ra 80 / 90		
Life-span of the Luminaire	L80B10 > 80,000 hours in Ta +25 °C		
Front cover / Main body	Tempered glass clear borosilicate		
Body end caps, parts	Salt water resistant painted aluminium		
	Inox screws and mounting brackets		
Ingress protection	IP66/68		
Operating Temperatures	-20 °C ~ +50 °C (+40 °C)		
Optical system	Linear lens 40° / 60° / 90° / 120° / diffused optics		
Glands – minimum requirements	Gases: Ⓜ II 2G Ex eb IIC Gb / Dusts: Ⓜ II 2D Ex tb IIIC Db / min IP64 **		
ATEX	FTZÚ 23 ATEX 0053X		
IECEX	IECEX FTZU 25.0016X		
CE Notify Body No.	CE1026		

\*\*To guarantee the certified IP protection rating of IP66/68 for the luminaire, a cable gland with an IP66/68 rating must also be used.

## Dimensions / cm (suspended luminaire)

Code	Name	Weight (kg)	Length	With	Height
E1-XSA/1-3/xxx/xxx-SS-xxx-xx-S-xx	doublepower!! SEA EX 1/21	7.5	118.3	14.5	12.0*
E1-XSA/2-3/xxx/xxx-SS-xxx-xx-S-xx	doublepower!! SEA EX 1/21	7.5	118.3	14.5*	12.0

\*Depends on used cable gland/s.

## Lighting Characteristics

