

SEA



DOUBLEPOWER!! SEA

EXTREMELY DURABLE

LED LUMINAIRE FOR MARINE

AND OFFSHORE OPERATIONS

DOUBLEPOWER!! SEA

- Luminaire efficacy up to 165 lm/W
- IP68, pc or glass tube body
- Life-span of the luminaire 80.000 hours (L80B10)
- Emergency battery option available
- Various performance variations
- 6 years warranty minimum

doublepower!!
industrial lighting | intelligent | efficient



DOUBLEPOWER!! SEA

EXTREMELY DURABLE

LED LUMINAIRE FOR MARINE

AND OFFSHORE OPERATIONS

Primary characteristics

- Designed for use on sea ships, offshore platforms, wind power plants but also in agriculture farms, chemical plants and similar demanding environments
- High luminaire efficacy of up to 165 lm/W according to the optics and material of the tube
- Borosilicate glass or UV stable PC clear or opal
- Various performance variations
- Optional correlated colour temperature 2700–6500K
- IP 68 enclosure rating, salt water resistant
- Primary lighting characteristics of 40°, 60°, 90° and 110°, asymmetric characteristic available
- Quick and easy installation
- Anti-corrosive mounting rings
- Available with pressure balancing valve
- Connector IP68 or cable gland
- Emergency battery option

Modularity and variability

The luminaire is available in four performance variations for both glass and polycarbonate version. Each variation can be produced according to the client's needs with aluminium or stainless steel cups (A4), optional valve to balance changing air pressure, connection by a connector or cable gland.

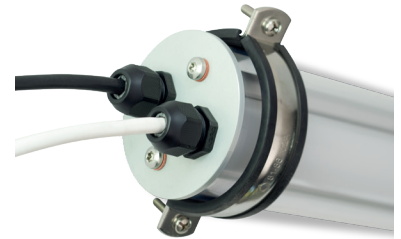
Luminaire construction

Luminaire body is based on 80mm glass or polycarbonate tube with stainless steel (A4) or aluminium anodised end cups. All outside parts are salt water resistant.

NEED ADDITIONAL INFORMATION? JUST CONTACT US. WE'LL BE HAPPY TO GIVE YOU MORE.
CALL +420 222 312 917 OR EMAIL US AT INFO@DOUBLEPOWER.CZ.



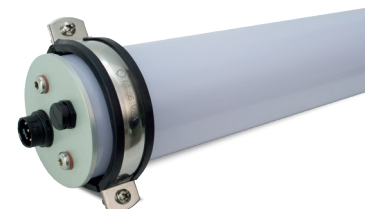
doublepower!! SEA exists in various lengths and performance variations from 14.2W to 56.8W.



Connector IP68 is resistant against saltwater and most chemical evaporations. It can be replaced by another tailored solution according to client's wish.



Quick and easy installation using stainless steel brackets.



The luminaire can be produced with glass or polycarbonate tube, clear or frosted





Specification

	1 module	2 modules	3 modules	4 modules
Output	14,2 W	28,4 W	42,6 W	56,8 W
Luminous flux of the Luminaire with 4000K	2 312 lm	4 624 lm	6 936 lm	9 249 lm
Efficacy of the LED chip / luminaire	171,86 lm/W / 165,15 lm/W			
LED light source	doublepower!! Samsung LM301B / TRIDONIC LLE G4 ADVANCE, 2700-6500K			
Life-span of the luminaire	L80B10 > 80.000 hours in Ta +25°C			
Front cover / Main body	Glass clear borosilicate or Polycarbonate clear / diffused			
Body end caps, parts	Anodized aluminium salt water resistant or stainless steel (A2 or A4) Inox screws and mounting rings UV stable plastic connector, valve, glands / metal cable glands			
Protection rating	IP68			
Operating temperatures	-40°C ~ +50°C			
Optic system	Linear lens 40° / 60° / 90° / 110° / asymmetrical version / diffused optics			
Other	No stroboscopic effect DALI / DSI smooth control, possibility to include into a complex DALI / KNX Control system, optional emergency battery module			
Manufacturer	doublepower!! s.r.o. Czech Republic			

Note: Valid for the version with 60° optics, 4000K, glass tube, specifications for other versions can slightly vary depending on the optics, color temperature and material of the tube.

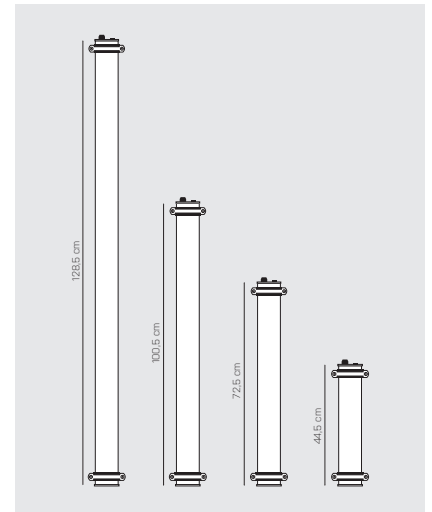
Dimensions / cm [suspended luminaire]

Polycarbonate body

Code	Name	Weight [kg]	Lenght	Width	Height
DP-SA-114-HE-xx-xxx-xx-P	doublepower!! SEA 14W, PC	1,3	44,5	10,5	13,5
DP-SA-214-HE-xx-xxx-xx-P	doublepower!! SEA 28W, PC	1,8	72,5	10,5	13,5
DP-SA-314-HE-xx-xxx-xx-P	doublepower!! SEA 43W, PC	2,35	100,5	10,5	13,5
DP-SA-414-HE-xx-xxx-xx-P	doublepower!! SEA 57W, PC	2,85	128,5	10,5	13,5

Glass body

Code	Name	Weight [kg]	Lenght	Width	Height
DP-SA-114-HE-xx-xxx-xx-A	doublepower!! SEA 14W, Glass	1,75	44,5	10,5	13,5
DP-SA-214-HE-xx-xxx-xx-A	doublepower!! SEA 28W, Glass	2,5	72,5	10,5	13,5
DP-SA-314-HE-xx-xxx-xx-A	doublepower!! SEA 43W, Glass	3,25	100,5	10,5	13,5
DP-SA-414-HE-xx-xxx-xx-A	doublepower!! SEA 57W, Glass	4,05	128,5	10,5	13,5



Lighting characteristics

