

one



www.doublepower.cz

ONE

Linear luminaire with high efficiency for demanding industrial applications and more

IP66.

efficiency up to 191 lm/W.

Warranty up to 10 years / lifetime over 100,000 hours.

Suitable replacement for 2 x 36 and 2 x 58 W T8 lamps.

Robust construction enabling application in demanding conditions.

The possibility of connection using an IP68 connector or gland.



High endurance

doublepower!! ONE, like all our other products, was developed with an emphasis on endurance and long lifetime as well as resistance to challenging environmental influences.

It's main advantages compared to conventional LED light fixtures are:

- Robust construction made of die-cast anodized aluminium and a specially designed profile guaranteeing ideal heat dissipation from the LED chips even in extreme conditions
- Separation of the driver from the body, which significantly contributes to the thermal comfort of the chips
- Glands and other components made of high-quality stainless steel
- IP 66 protection, including the connector
- Long-life LED chips and industrial driver from the world's leading manufacturers

Low glare with high efficiency

Although the high efficiency of the product, double power!! ONE ensures perfect lighting comfort and a low glare. At all mounting heights and at any lighting level, its glare values remain well below the permissible limits. We managed to achieve this unique combination of high efficiency and low glare due to the use of a new type of optics.



There are four types of optics with high efficiency and minimum glare level to choose from.

Sustainability

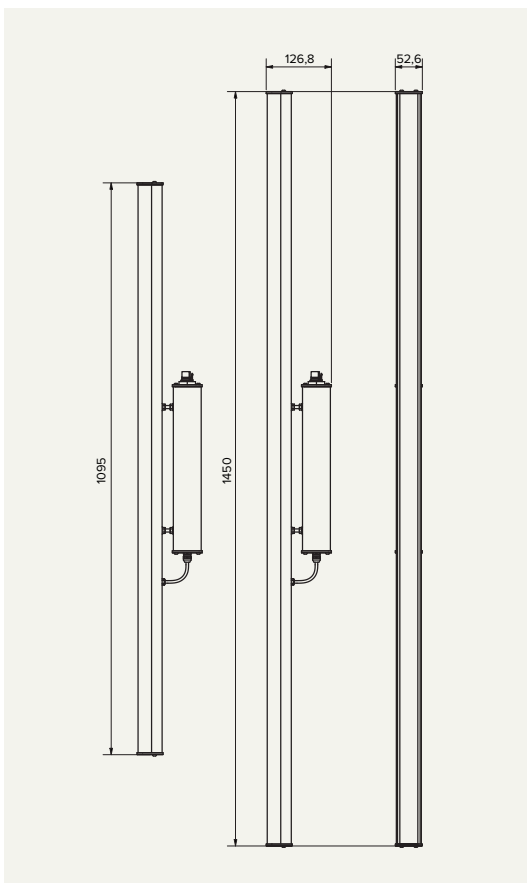
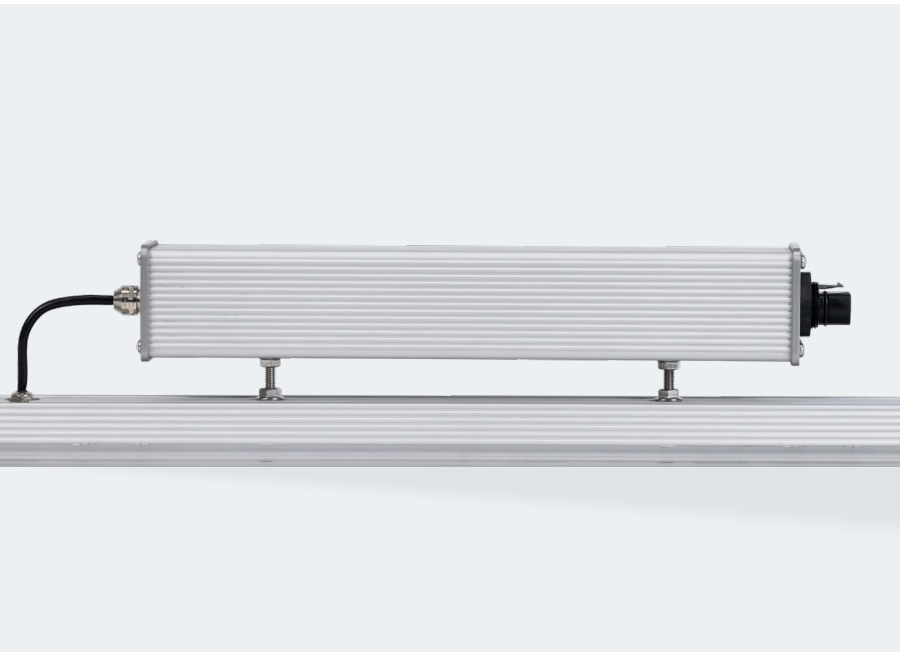
Industrial lighting is truly efficient only if its key parameters are constant for a sufficiently long time, even in demanding conditions or continuous operation. Therefore, our new luminaire doublepower!! ONE was designed, just like our other products, with the highest demands for long-term sustainability.

The basic lifetime of the lamp in the L80B10 parameter is min. 100,000 hours, even at temperatures up to 50 °C. In addition to the quality of the components used, the credit for such a long service life also goes to the unique aluminium body of the lamp and low supply currents, thanks to which the key elements of the lamp work in exceptional comfort, well below the limit temperatures.

ONE / Linear luminaire with high efficiency for demanding industrial applications and more

The separation of the driver significantly contributes to the thermal comfort of the chips.

Extensive mounting options. For easy assembly, the product is equipped with four movable M6 nuts.



Main characteristics

Two different power output types serve as a full replacement for the old T8 2 x 36, and 2 x 58W fluorescent lamps

Efficiency up to 191 lm/W at Ta 50 °C

Low glare and maximum power output combined with unique efficiency due to special optics

L80B10 lamp life over 100,000 hours at Ta 50 °C

10-year warranty

Easily accessible suspension using M6 nuts and connection by connector or gland

Specification

	replacement for T8 2x36W 3 modules	replacement for T8 2x58W 4 modules
Output	30 W	43 W
Luminous Flux of the Luminaire with 4000 K	5,684 lm	8,305 lm
Efficacy of the LED chip / luminaire	202 lm/W / 191 lm/W	
LED Light Source	doublepower!! L128, 2,700 – 6,500 K	
Lifetime of the light source	L80B10 > 100,000 h at Ta +50 °C	
Front cover / body	PMMA (semi-transparent) / aluminium profile	
Output elements and connectors	Anodized aluminium Stainless steel screws UV stable plastic connectors, metal cable glands	
Protection rating	IP66	
Operating Temperatures	-20 °C ~ +50 °C	
Optical system	Linear diffuse optics	
Other	No stroboscopic effect DALI / DSI smooth control, possibility to include into a complex DALI / KNX control system	
Manufacturer	doublepower!! s.r.o. Czech Republic	
Note	Applies to the 30 W version with a colour temperature of 4,000 K and semi-transparent optics. The characteristics of the other versions may differ slightly, mainly depending on the colour temperature and material.	

Dimensions / cm

Code	Name	Weight (kg)	Length	With	Height
DP-ON-309-HE-xx-FR-N	doublepower!! ONE 30 W	2	109,5	5,3	13
DP-ON-410-HE-xx-FR-N	doublepower!! ONE 43 W	2,4	145	5,3	13

Lighting Characteristics

