

STAR



DOUBLEPOWER!! STAR

BIGBOARD LIGHTING,

OUTDOOR ADVERTISING PANELS,

TRAFFIC SIGNS

DOUBLEPOWER!! STAR

- Highly uniform distribution of lighting throughout the advertising panel
- Software and control system for remote management and maintenance
- Minimum maintenance costs
- Luminous flux efficacy up to 160 lm/W
- L80B10 = 80 000 hours
- IP65
- 8 year unlimited warranty

doublepower!!
industrial lighting | intelligent | efficient

STAR

Doublepower!! STAR luminaire is the result of one and a half years of development and close cooperation in testing with a leading European operator of advertising bigboards and billboards.

Main features

- Its design and lighting characteristics ensure highly uniform illumination and minimum loss beyond the illuminated area
- The aluminium body of the luminaire ensures effective cooling even during the hot summer months.
- Unique front-screen heating technology ensures your advertising panels will be illuminated regardless of snow or frost
- The service life and sustainability of 80 000 hours of light for L80B10 translate to reduced costs on maintenance and replacements
- Modularity (input power variations) and variability (lighting characteristics) facilitate the illumination of various areas with maximum efficacy
- Software solution for remote luminaire management – end of visual functional and operational inspections
- Designed to make installation easy and adapts

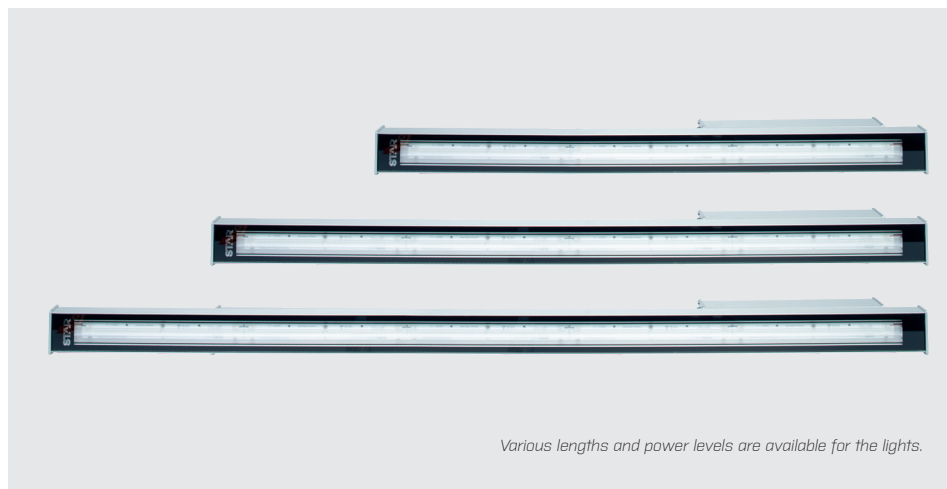
Light only in areas where it is needed, efficiently

Doublepower!! STAR luminaire illuminates target areas evenly and ensures minimum light is emitted to the surrounding area. With the modularity and variability of lights from the doublepower!! STAR family of lights, this applies to various outdoor use, lighting panel sizes, or distances and locations for placing lighting points from the target area.

All at low operational costs due to high flux efficacy reaching 160 lm/W.

Bring on the heat...

A specially designed aluminium body and the overall design of the luminaire ensures efficient heat conduction during the warm summer months. LED chips and electronic lights operate in comfortable temperature conditions, even under ambient temperatures exceeding 40°C.



Various lengths and power levels are available for the lights.

DOUBLEPOWER!! STAR

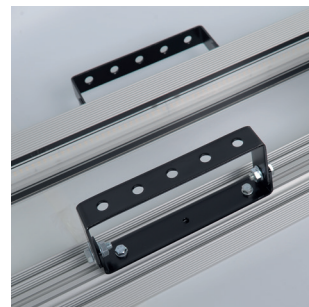
BIGBOARD LIGHTING,

OUTDOOR ADVERTISING PANELS,

TRAFFIC SIGNS



The IP68 rating connector ensures a simple connection. At the request of the customer, it can be replaced with a custom solution.



An adaptive holder for various fixation spans based on the client's specifications is included.



A specially designed aluminium body ensures efficient heat conduction during the warm summer months. On the contrary, a unique front-screen heating system is automatically activated if the luminaire is covered by ice, frost or snow.



STAR

Or frost...

At doublepower!! we developed a unique front-screen heating system which is a combination of design and control software. The system is automatically activated in case the luminaire is covered by ice, frost or snow. Snow or ice is melted in a very short period of time. For example, 10 cm of solid snow at a temperature of -25°C will be melted within 30 minutes.

Remote control

Doublepower!! STAR lights can be fitted with a GSM module and provide remote control and monitoring capabilities. Have everything surrounding the light system under control and, in case of a failure or discrepancy in behaviour, you will automatically be informed by the system.

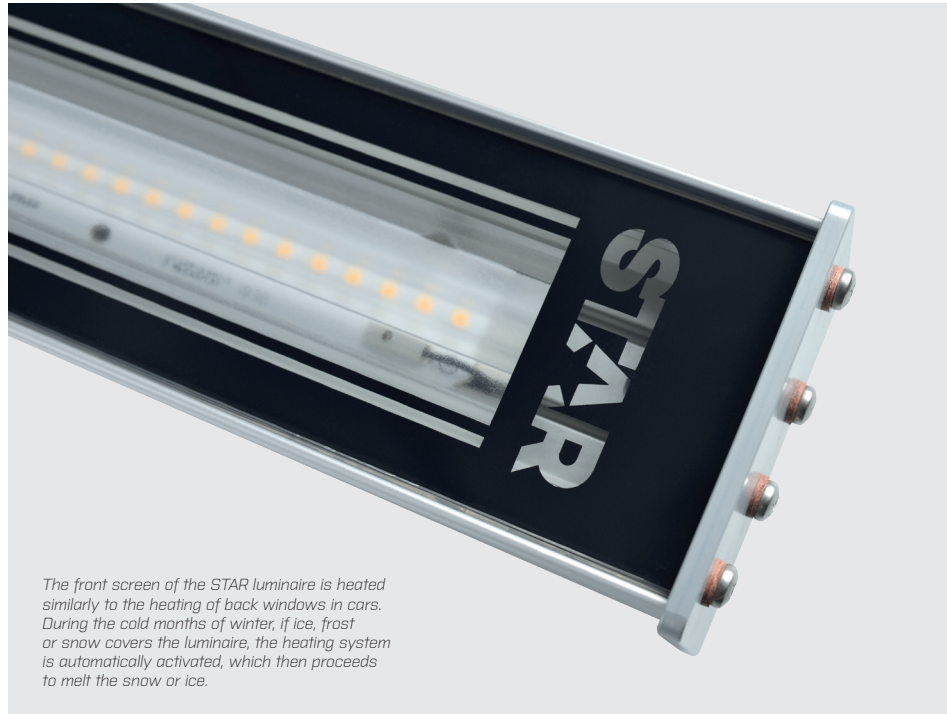
Sustainability

A service life of 80 000 hours with L80B10 factor.

Easy installation

The STAR luminaire design enables the quick, easy and economical fixation of lights under all conditions. An adaptive holder for various fixation spans based on the client's specifications is included.

NEED ADDITIONAL INFORMATION? JUST CONTACT US. WE'LL BE HAPPY TO GIVE YOU MORE.
CALL +420 222 312 917 OR EMAIL US AT INFO@DOUBLEPOWER.CZ.



The front screen of the STAR luminaire is heated similarly to the heating of back windows in cars. During the cold months of winter, if ice, frost or snow covers the luminaire, the heating system is automatically activated, which then proceeds to melt the snow or ice.

DOUBLEPOWER!! STAR

BIGBOARD LIGHTING,

OUTDOOR ADVERTISING PANELS,

TRAFFIC SIGNS



The luminaire has high quality LED chips from Samsung with chromatic temperatures of 2700K through 6500K.



Separating the ballast from the luminaire body guarantees that the ballast and LED chips do not mutually affect one another and function in maximum temperature comfort. This had a positive affect on the service life of the luminaire.



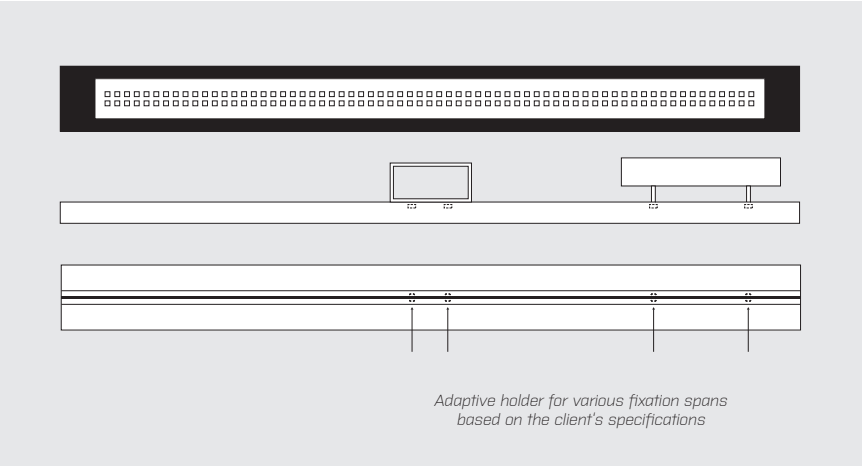
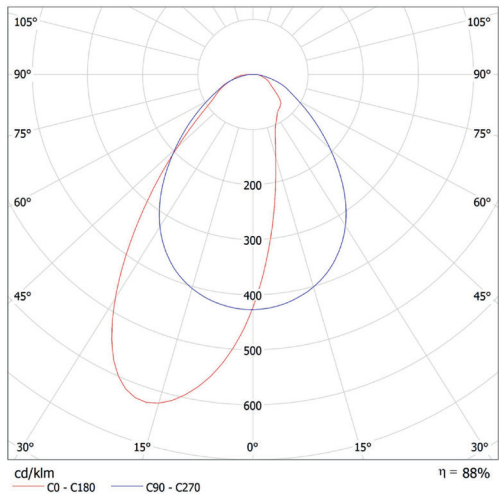
A valve in the luminaire body helps balance the pressure during the controlled heating of the luminaire in the winter.



Specifications

	2 modules	3 modules	4 modules	5 modules	6 modules	7 modules	8 modules
HE version input power	26,6 W	39,9 W	53,2 W	66,5 W	79,8 W	93,1 W	106,4 W
HO version input power	30,8 W	46,2 W	61,6 W	77,0 W	92,4 W	107,8W	123,2 W
Luminous flux at 4000K HE	4 243 lm	6 364 lm	8 486 lm	10 607 lm	12 729 lm	14 850 lm	16 972 lm
Luminous flux at 4000K HO	4 806 lm	7 209 lm	9 612 lm	12 016 lm	14 418 lm	16 821 lm	19 224 lm
Chip efficiency / HE light	181,9 lm/W / 159,5 lm/W						
Chip efficiency / HO light	178 lm/W / 156 lm/W						
Light source	Samsung chip 2700K-6500K						
Service life	L80B10 = 80 000 hours, L80B50 = 105 000 hours at Ta +45°C						
Front cover	3mm tempered glass AGC ClearVision						
Luminaire body	Anodized aluminium profile, separate box for power supply						
	Highly efficient heat conduction for optimal light temperature management						
	Low operating temperatures of the light and components						
Rating	IP66						
Operating temperatures	-40°C ~ +50°C						
Optic system and reflectors	Linear optics 60° / 90° / 85°+ +45°, asymmetric and special characteristics						
Manufacturer	doublepower!! s.r.o. Czech Republic						

Lighting characteristics



Luminaire dimensions

model	length	height	width
2 module units	66,4	14	7,5
3 module units	94,4	14	7,5
4 module units	122,4	14	7,5
5 module units	150,4	14	7,5
6 module units	178,4	14	7,5
7 module units	206,4	14	7,5
8 module units	234,4	14	7,5

Height excluding power supply 4.4 cm

